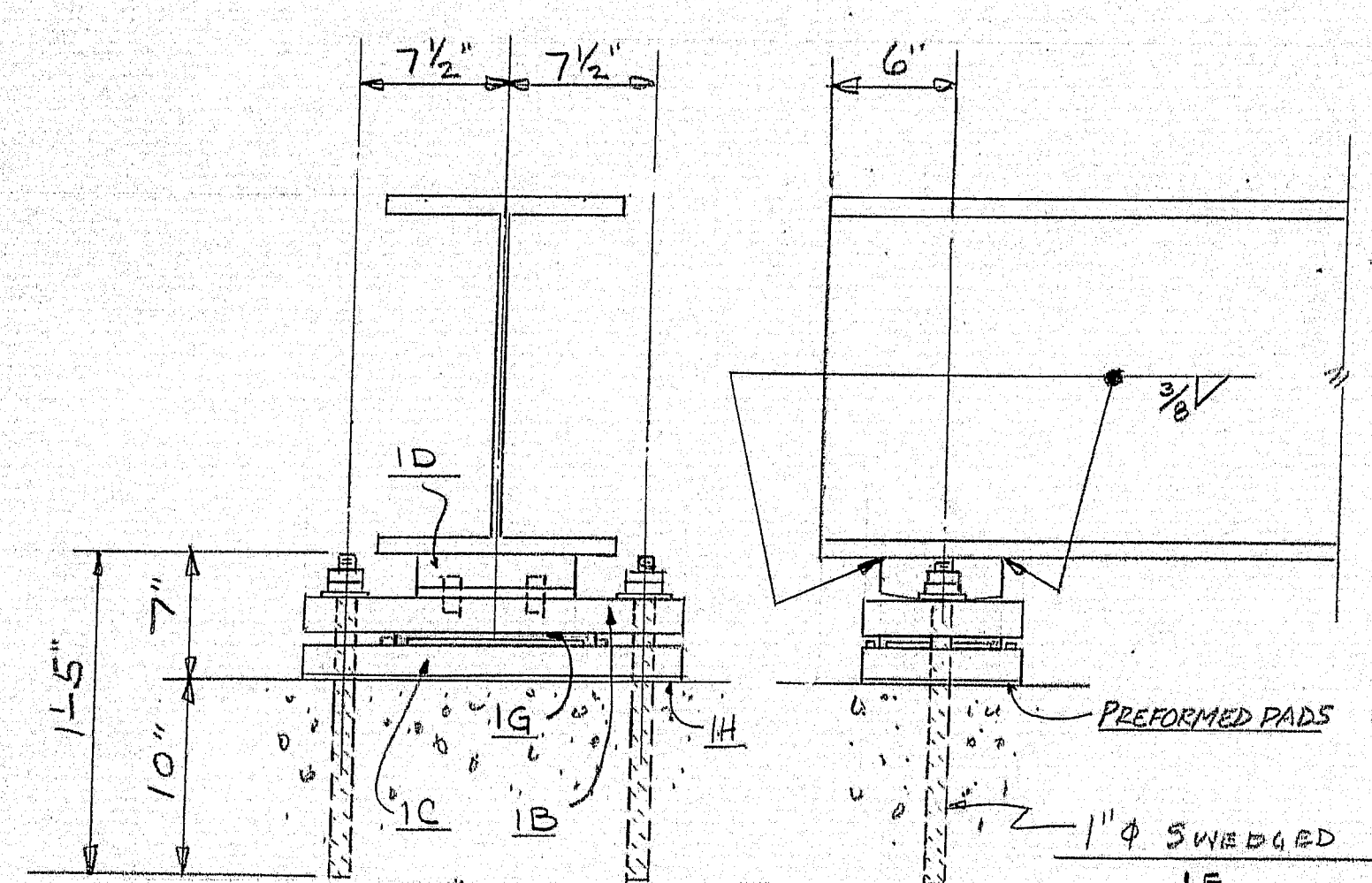


(FPB-1)  
FIXED BEARINGS.

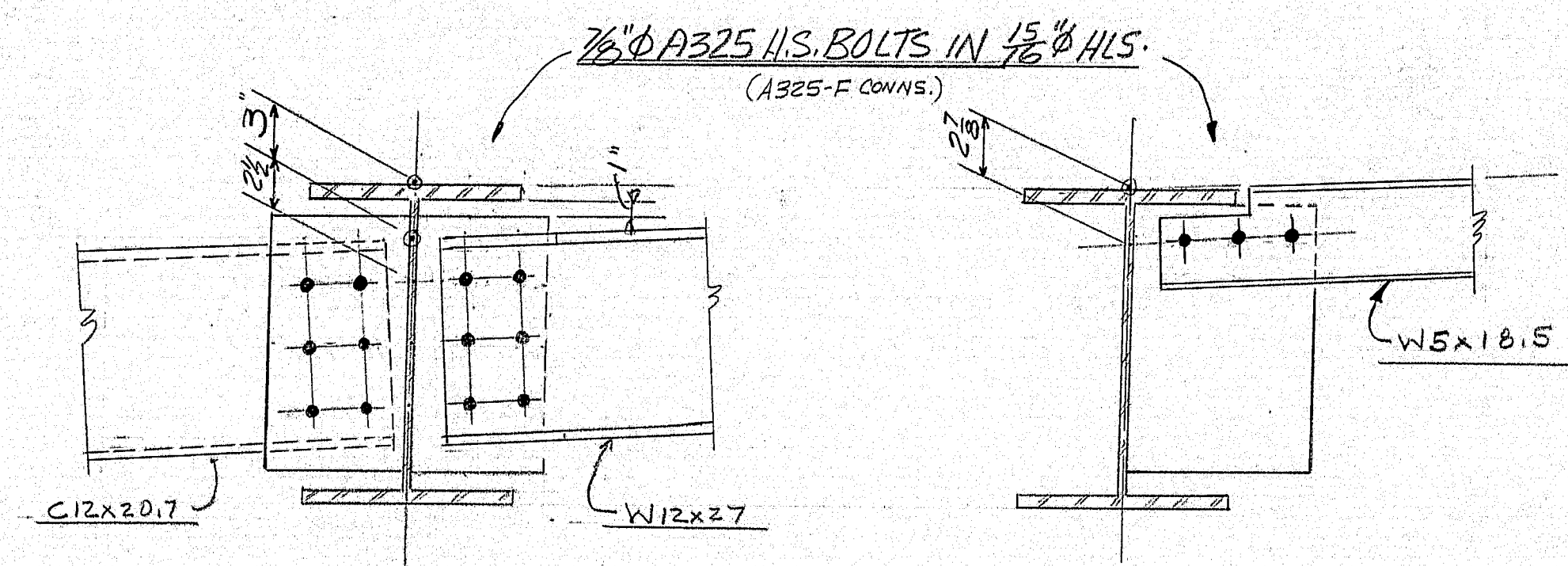
AT BM'S 3-4-5-6- AT ABUT. NO. 1



(EPB-1)  
EXPANSION BEARINGS.

BM'S. 1-2-7-8 AT ABUT. NO. 1

ALL BM'S AT ABUT. NO. 2



DIAPHRAGM DETAILS.

REFER TO SH. 2A

APPROVAL AND REVISIONS		MAINE D.O.T. Project # MG-7201 (1)	
1 F.A. 4/22/76		MAINE - CASCADE IRON WORKS	
2 FFA 6/16/76		BAKER STREET, CLINTON, MAINE 04927	
3 DET 7/19/76		PHONE 207-428-2091	
4 * SHIP 8/1/76		PROJECT	NORTH ST. BRIDGE
		LOCATION	WATERVILLE, ME.
		ARCHITECT	STATE OF MAINE
		CONTRACTOR	CALLAHAN BROS. INC.
PAINT SEE DET. DWGS.		DRAWN BY	MARKED BY MARCO BM
HOLES SEE DET. DWGS.		CHECKED BY	DATE 2-12-75
		PROJ. NO.	76-220
		DRWG. NO.	E1

162-37



# MATERIAL SCHEDULE

MARK	NO.	SHAPE	LENGTH	O. OR S.	CUT FROM	REMARKS	WEIGHT
4	1A	R 8 x 2	1 7	"B337		MACHINED PER DET A36	345
12	1B	R 8 x 1 3/4	1 7	"B337			904
12	1C	R 8 x 1 3/4	1 7	"B337			904
16	1D	R 6 x 2	0 8	"B337			435
1E	24	1" R 20	1 5	"B337		W/2 HEX NUTS A307	91
1F	8	D 1	3	"B337		D 2	27

24	P1	BAR 1/2 x 1/4	0 8	STK.		A36	7
24	P2	D 1	0 4	STK.			3
24	P3	R 3 x 1/4	0 5	STK.			25
8	M1	1" STD. WASHERS		"B337			2
32	M2	1" R 20	0 1/2	STK.	FORM 3/4	MACHINED PER DET	11

12	1G	R 6 x 1/2	0 10	"B337		BRONZE SELF LUB'G, ASTM B22 ALLOY B	
16	1H	8 x 1/2	1 7	"B337		NEOPRENE PREFORMED PADS	

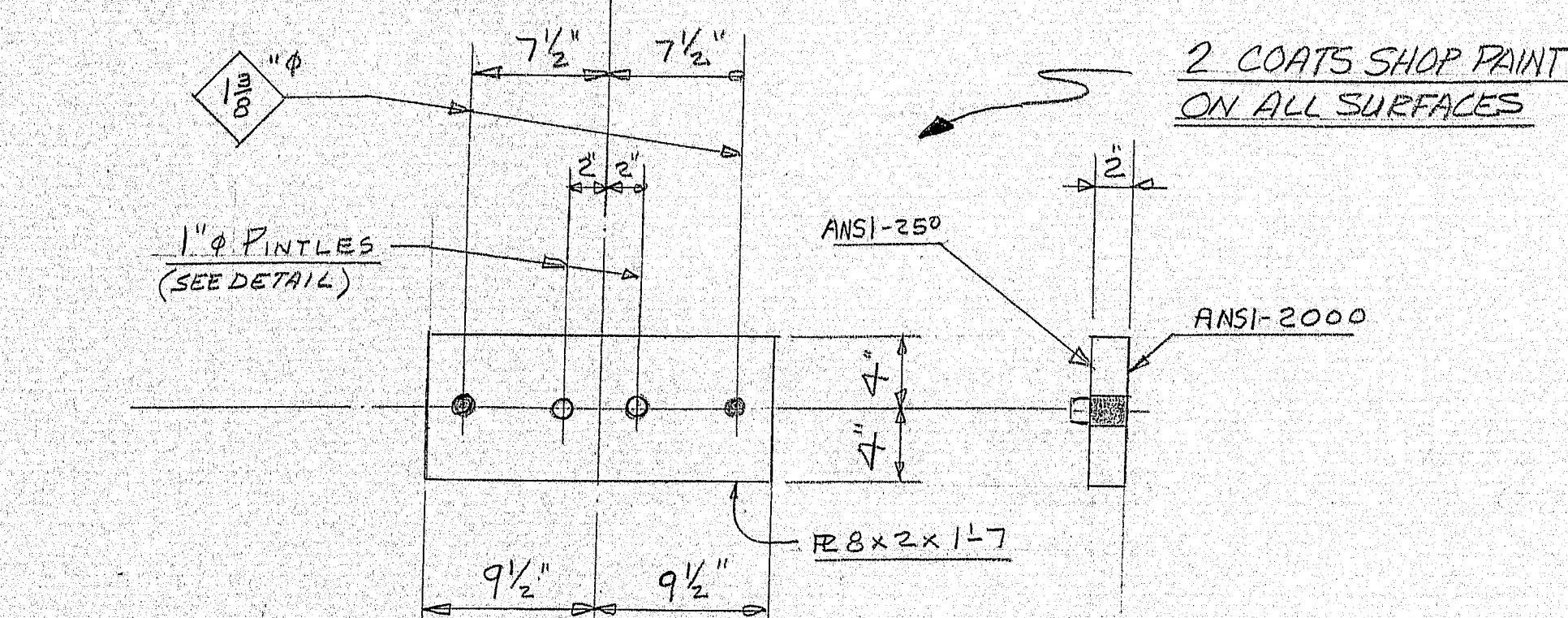
FPB-4 BEARING PAD ASSEMBLY (SEE EXPLANATION)

EPB-12 BEARING PAD ASSEMBLY (SEE EXPLANATION)

2759

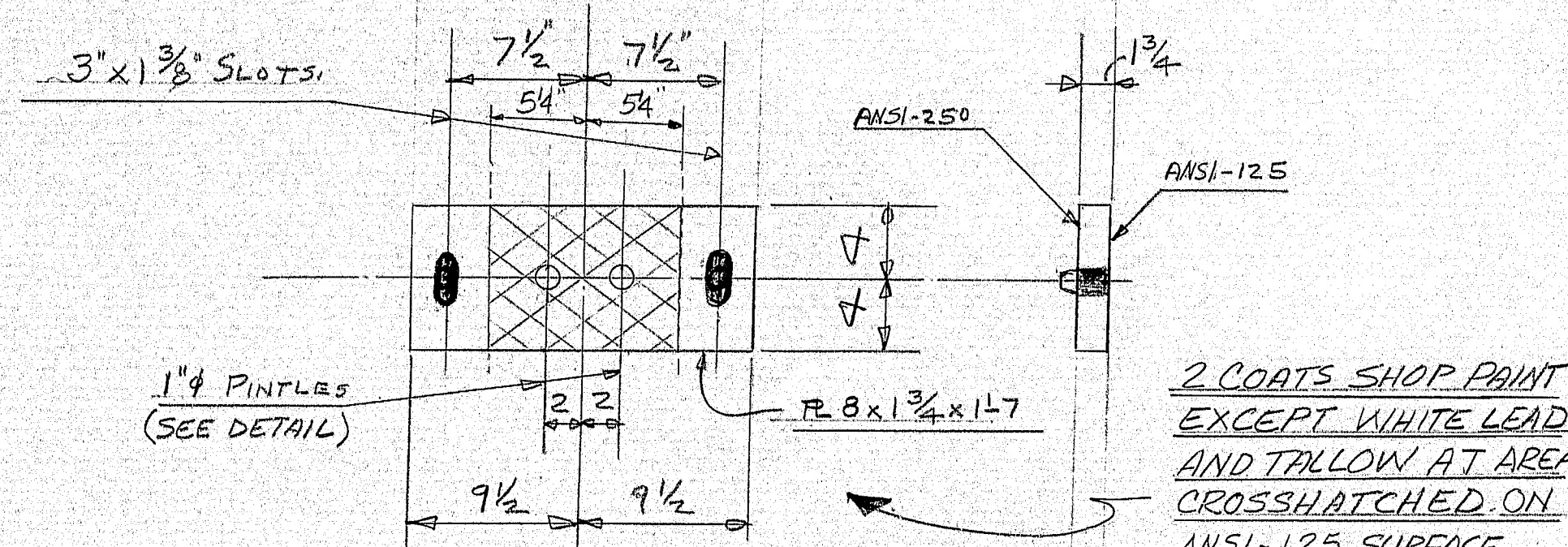
APPROVAL AND REVISIONS	MAINE DOT PROJECT # M6-7201(1)
1. FA. 4/22/76	MAINE - CASCADE IRON WORKS
2. FA. 6/16/76	BAKER STREET, CLINTON, MAINE 04927
3. DIST. 7/14/76	PHONE 207-426-2691
4. REVISION 7-15-76	PROJECT NORTH ST. BRIDGE
5. SHOP. 8/1/76	LOCATION WATERVILLE, ME.
	ARCHITECT STATE OF MAINE
	CONTRACTOR CALLAHAN BROS., INC.
PAINT AS NOTED	DRAWN BY MARCO
HOLES AS NOTED	CHECKED BY MARCO
	DATE 2-12-75
	PROJ. NO. 76-220-5
	DRWG. NO. 1

162-38



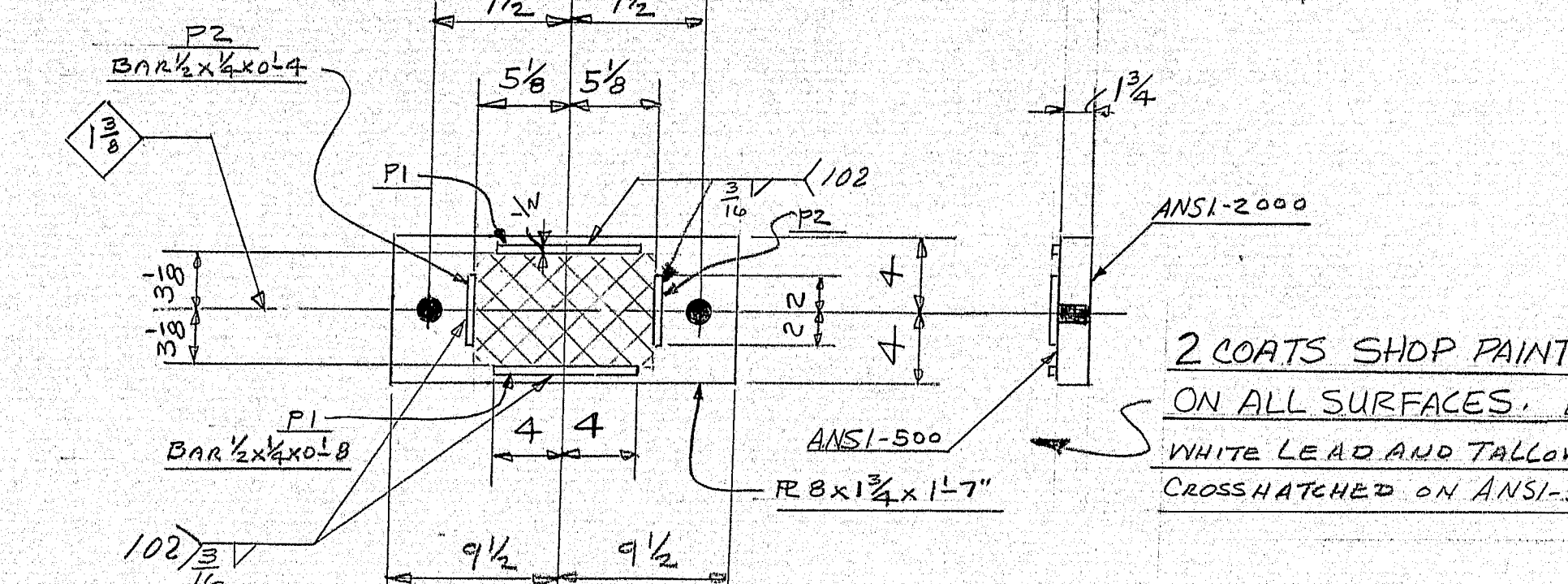
4 REQ'D - MARK 1A

ITEM - 4



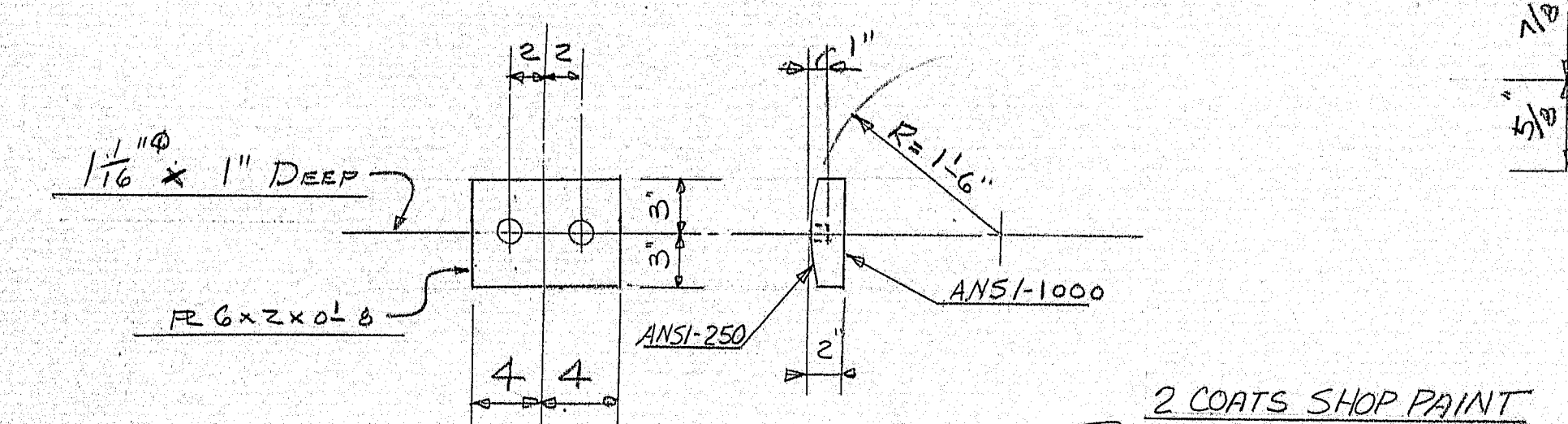
12 REQ'D - MARK 1B

ITEM - 4



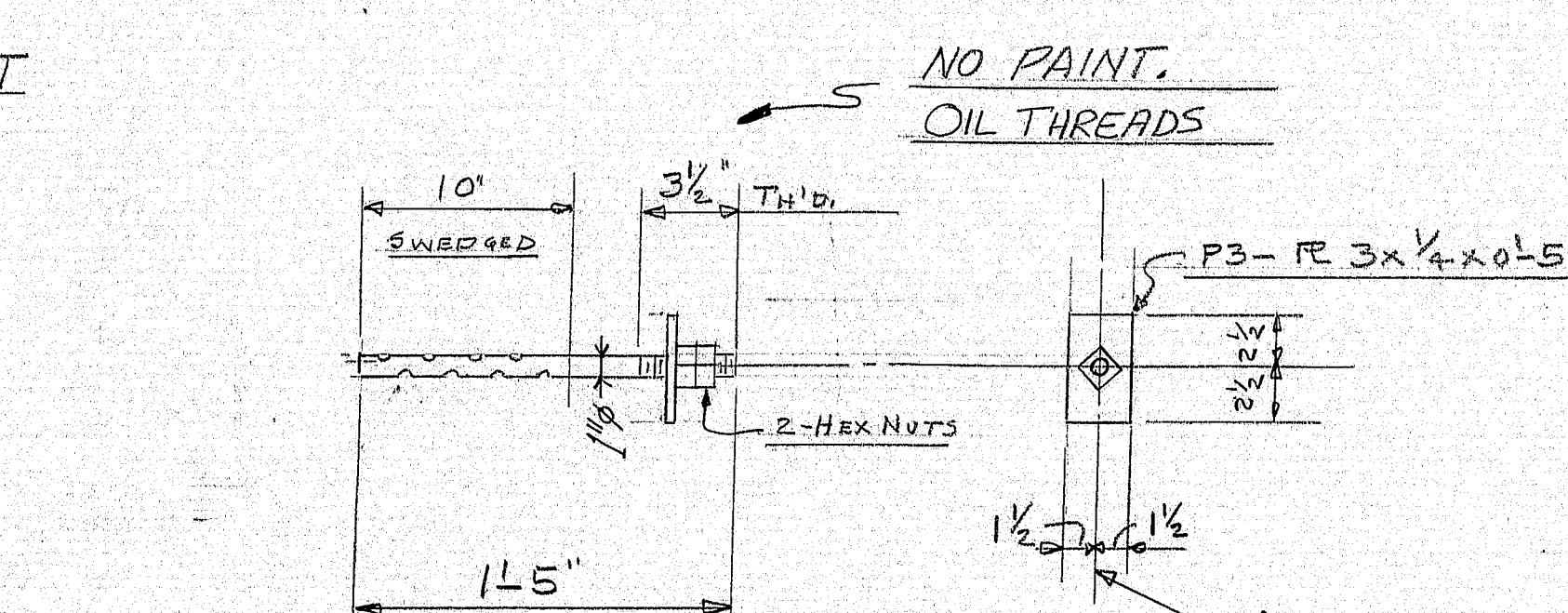
12 REQ'D - MARK 1C

ITEM - 4



16 REQ'D - MARK 1D

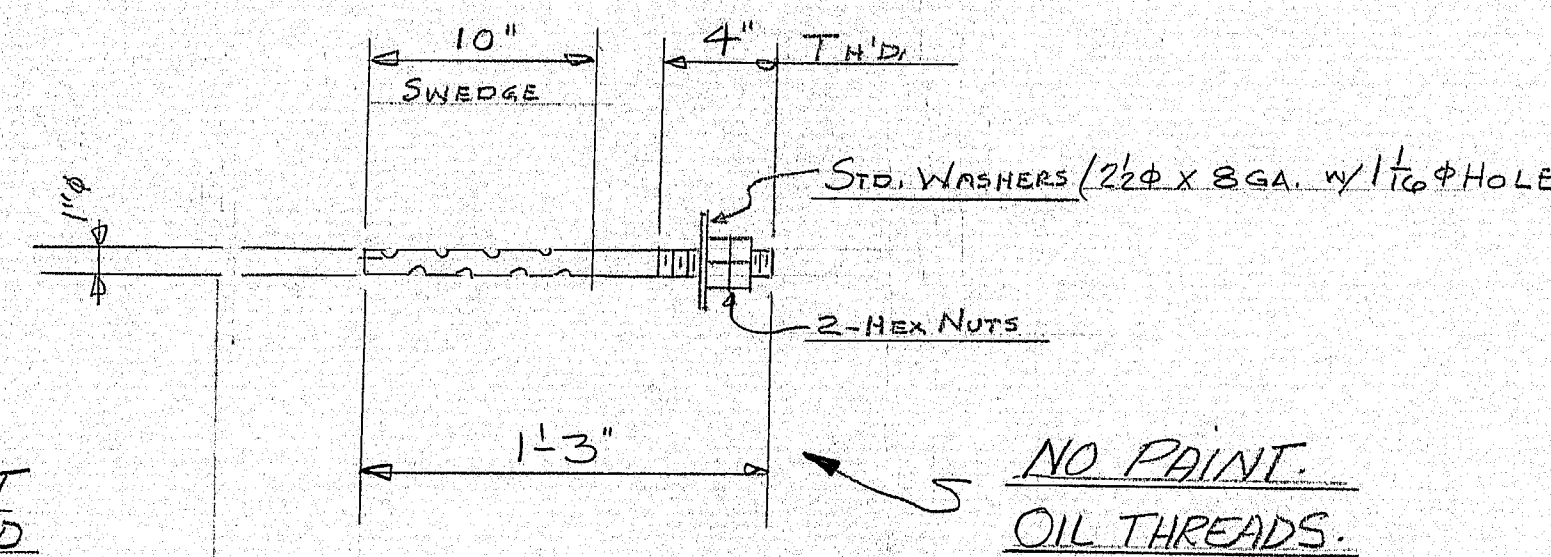
ITEM - 4



24 REQ'D - MARK 1E

FOR EPB1

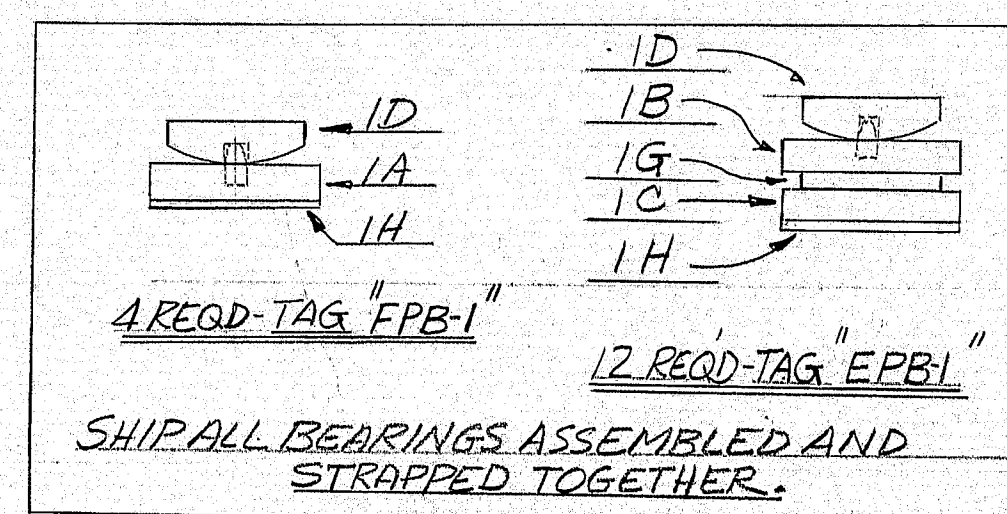
ITEM - 5



8 REQ'D - MARK 1F

FOR FPB1

ITEM - 5



4 REQ'D - TAG "FPB-1"

12 REQ'D - TAG "EPB1"

SHIP ALL BEARINGS ASSEMBLED AND STRAPPED TOGETHER.

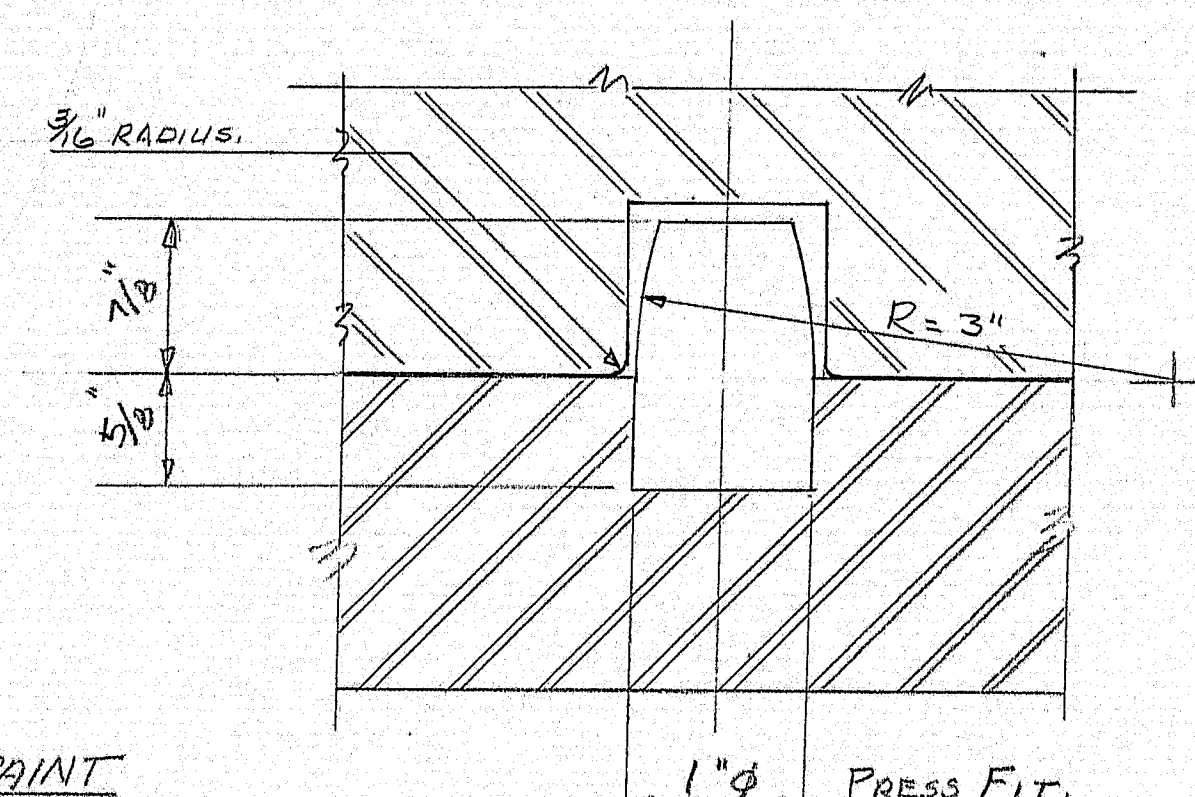
NO FAB ITEMS:

16 REQ'D - MARK 1H - 8 x 1/2 x 1-7"  
NEOPRENE PREFORMED PADS

12 REQ'D - MARK 1G - R 6 x 1/2 x 0-10"  
BRONZE SELF LUBRICATING.  
ITEM - 4

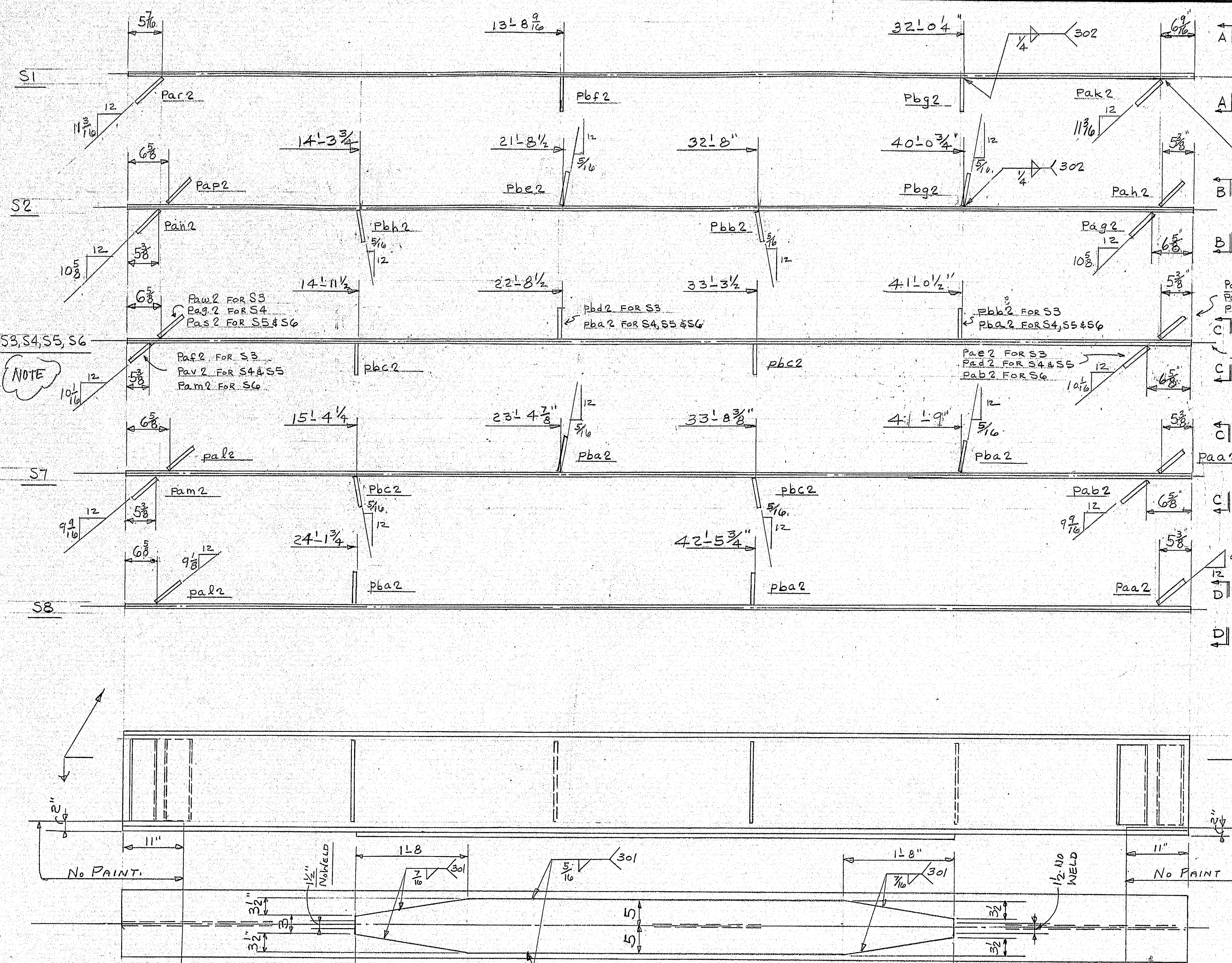
PAINT NOTE:

COAT SURFACE ACCORDING TO NOTE AT EACH DETAIL.  
PAINT TO BE BASIC LEAD SILICO-CHROMATE (ORANGE)



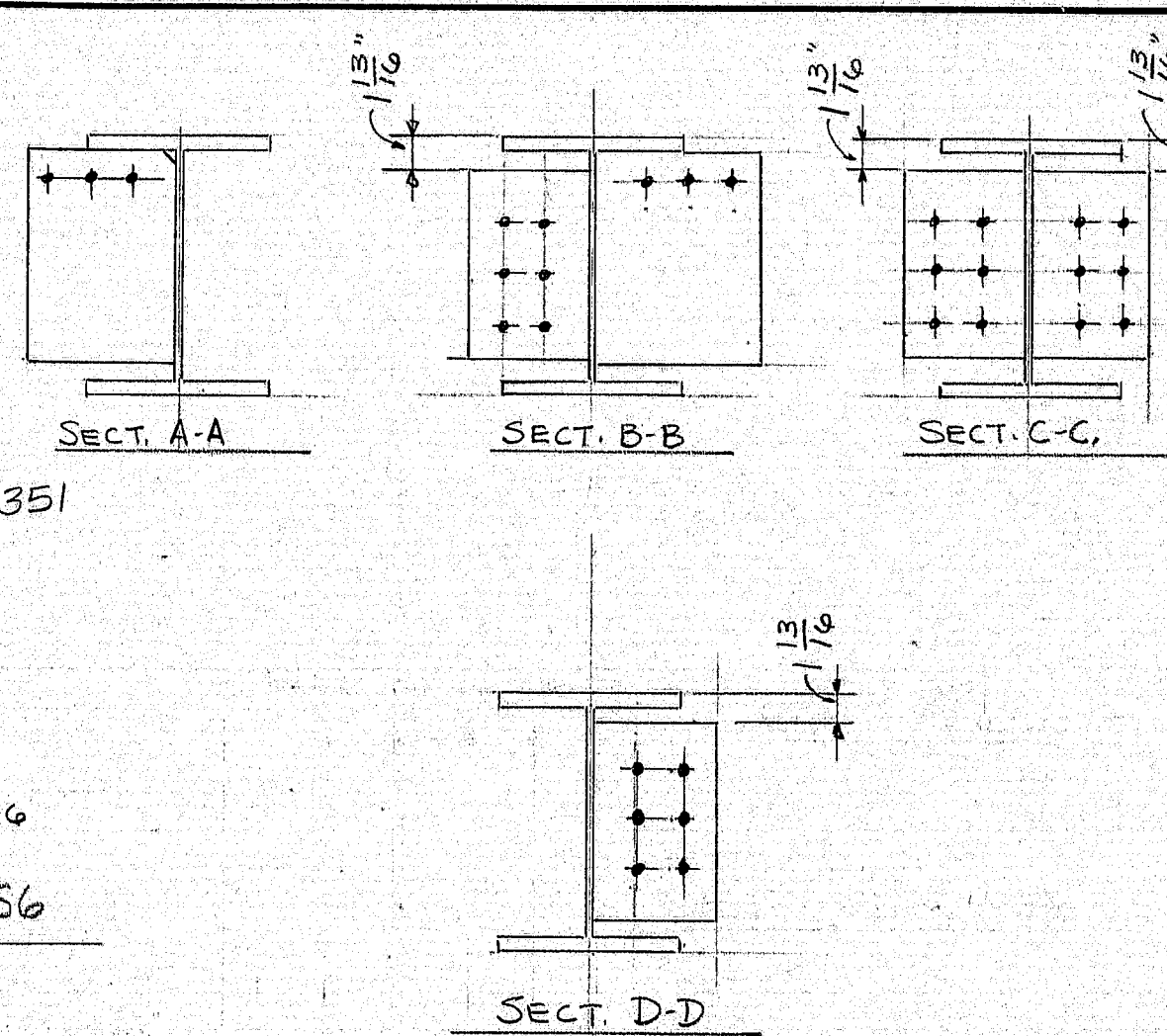
PINTLE DETAIL.



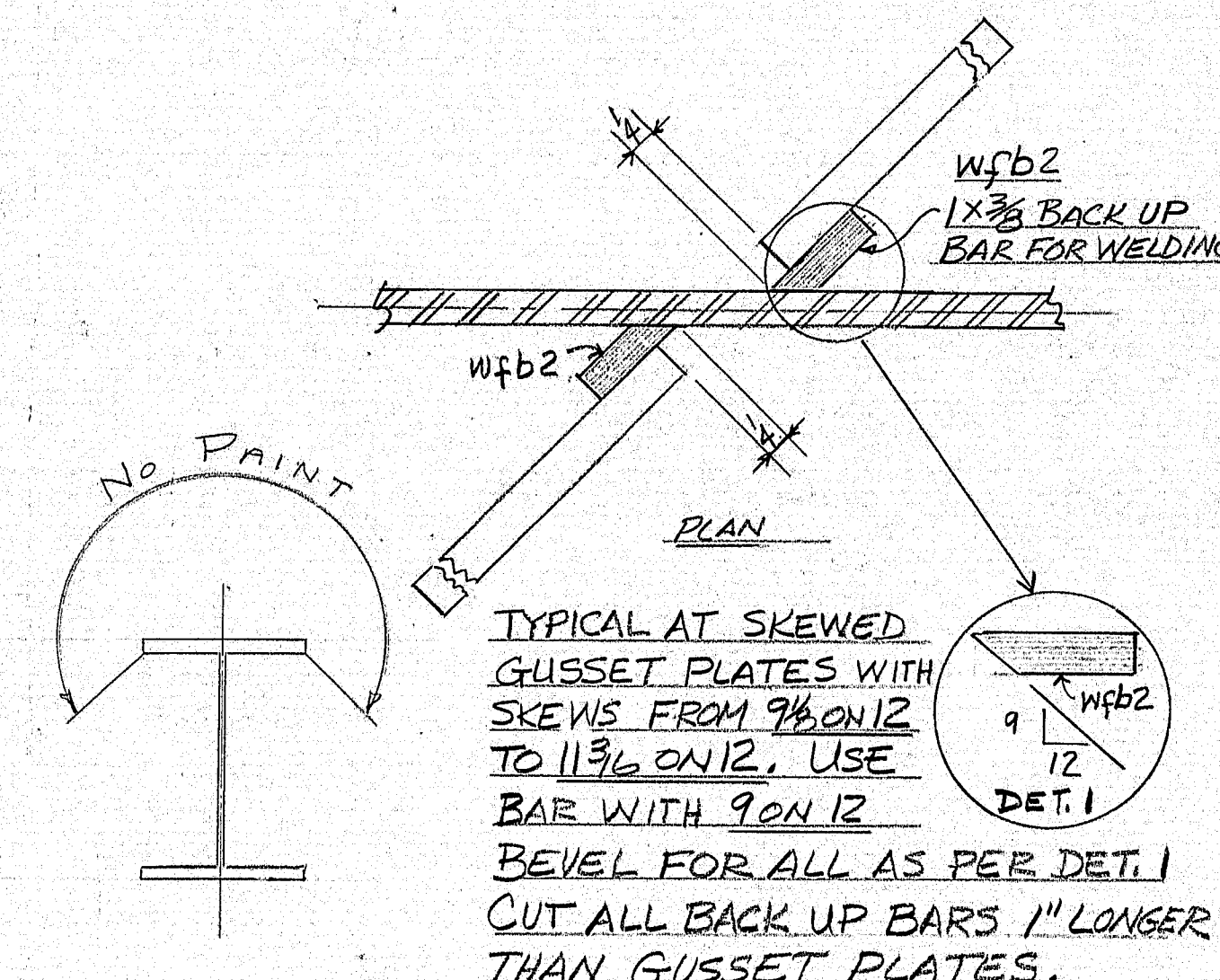


8'-10 1/16"	P1 - R 10x1 x 35 L 0	S1
7'-2 1/4"	P2 - R 10x1 x 40 L 0	S2
7'-0"	P3 - R 10x1 x 42 L 0	S3-S4-S5-S6
7'-10 5/16"	P4 - R 10x1 1/4 x 42 L 0	S7
7'-8 3/8"	P5 - R 10 x 1 1/4 x 44 L 0	S8

ONE-S1	W18x96	52'-9 3/8"
ONE-S2	D.	54'-4 1/2"
ONE-S3	D.	56'-0"
ONE-S4	D.	56'-0"
ONE-S5	D.	56'-0"
ONE-S6	D.	56'-0"
ONE-S7	D.	57'-8 5/8"
ONE-S8	D.	59'-5 3/4"



SEE DWG # 2A FOR DETAILS OF DIAPHRAGM CONN. PLATES.



NOTE: WELDING PROCEDURE 102 MAY BE SUBSTITUTED FOR WELDING PROCEDURE 302

NOTE: CAMBER ALL STRINGERS UP 4"

PAINT: 1 COAT - BASIC LEAD SILICO CHROMATE (ORANGE)

NO PAINT WITHIN 3" OF OPEN HOLES

NOTE: "CHARPY V-NOTCH REQUIREMENT" ON BEAMS AND COVER PLATES.

# MATERIAL SCHEDULE

MARK	NO. OF	SHAPE	LENGTH	O. OR S.	CUT FROM	REMARKS	WEIGHT
S1	1	W18x96	52'-9 3/8"	#302		A572 - GRADE 50	6067
S2	1	D.	54'-4 1/2"				5220
S3	1	D.	56'-0"				5376
S4	1	D.	56'-0"				5376
S5	1	D.	56'-0"				5376
S6	1	D.	56'-0"				5376
S7	1	D.	57'-8 5/8"				5541
S8	1	D.	59'-5 3/4"				5718

1	P1	R10x1	35'-0"	#302			1190
1	P2	D.	40'-0"				1360
1	P3	D.	42'-0"				5712
1	P4	R10x1 1/4	42'-0"				1785
1	P5	D.	44'-0"			A572 - GRADE 50	1971

NOTE: FOR BEAMS & COVER PLATES "CHARPY V-NOTCH REQUIREMENT"

2	P6a2	R7 1/2 x 3/8	1'-2 3/8"	STR.		A31	24
2	P6b2	D.	1'-2 3/8"				24
2	P6c2	D.	1'-2 3/8"				24
2	P6d2	D.	1'-2 3/8"				24
2	P6e2	D.	1'-2 3/8"				24
2	P6f2	D.	1'-2 3/8"				24
2	P6g2	D.	1'-2 3/8"				24
1	P6h2	R11 x 3/8	1'-3 1/8"				18
1	P6i2	D.	1'-3 1/8"				18
2	P6j2	R7 1/2 x 3/8	1'-2 3/8"				24
2	P6k2	D.	1'-2 3/8"				24
1	P6l2	D.	1'-2 3/8"				12
1	P6m2	R11 x 3/8	1'-3 1/8"				18
1	P6n2	D.	1'-3 1/8"				18
2	P6o2	D.	1'-3 1/8"				36
2	P6p2	R7 1/2 x 3/8	1'-2 3/8"				24
2	P6q2	R7 1/2 x 3/8	1'-2 3/8"				24
1	P6r2	D.	1'-2 3/8"				12
10	P6s2	R8 1/2 x 3/8	1'-2 3/8"				139
2	P6t2	R8 x 3/8	1'-2 3/8"				24
10	P6u2	D.	1'-2 3/8"				122
1	P6v2	D.	1'-2 3/8"				12
1	P6w2	R11 x 3/8	1'-3 1/8"				18
1	P6x2	D.	1'-3 1/8"				18
2	P6y2	D.	1'-3 1/8"				36
1	P6z2	R8 1/2 x 3/8	1'-2 3/8"				13
LF	P6aa2	BAR 1 x 3/8	37'-0"	STR.	2 20 0	CUT BEVEL TO DET.	

FIELD 3/8"	3/8" BOLTS	0	2	#3025	A325	237
50 3/8"	3/8" WASHERS				D.	49

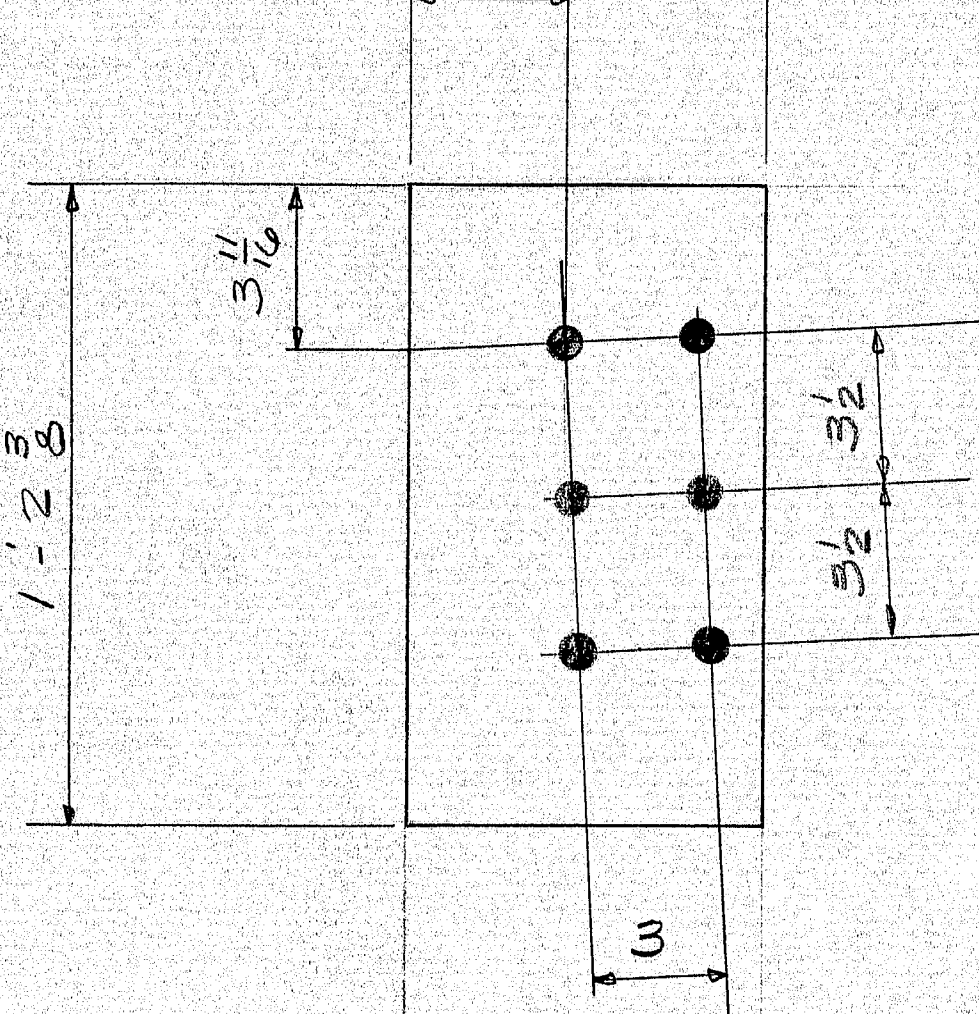
MAINE DOT, PROJECT #MA 7201 (1)

APPROVAL AND REVISIONS	MAINE - CASCADE IRON WORKS BAKER STREET, CLINTON, MAINE 04927 PHONE 207-426-2891
1 F.A. 4/22/76	PROJECT NORTH ST. BRIDGE
2 F.A. 6/11/76	LOCATION WATERVILLE, ME.
3 Dist. 7/11/76	ARCHITECT STATE OF MAINE
4 AD. BACK UP BAR 7/29/76	CONTRACTOR CALLAHAN BROS., INC.
5 Shop 8/2/76	
6 Dist 8/2/76	
7	
8	
9	PAINT SEE NOTE @ LEFT DRAWN BY MARCO CHECKED BY MARCO DATE 2-14-76
10	HOLES 1 5/16" PROJ. NO. 76-220-1 DRWG. NO. 2

162-39



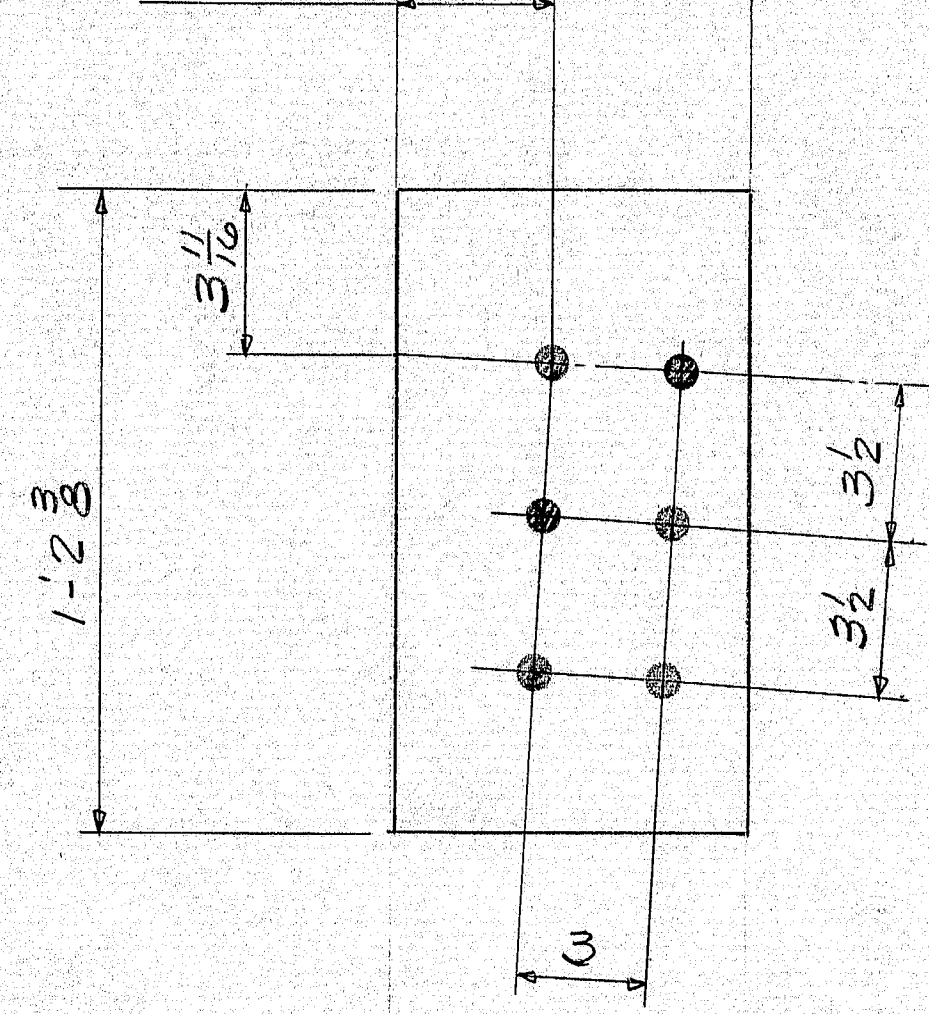
pba2 8 1/2  
 pbh2 8  
 BALANCE 7 3/4  
 pba2 & pbh2 3 1/2  
 BAL 2 3/8



3 - paa2  
 8 - pac2  
 4 - pag2  
 7 - pal2  
 7 - pan2  
 3 - pas2  
 2 - pba2  
 6 - pbh2

2 - paa2  
 2 - pac2  
 2 - pag2  
 2 - pal2  
 1 - pan2  
 2 - pas2  
 10 - pba2  
 1 - pbh2

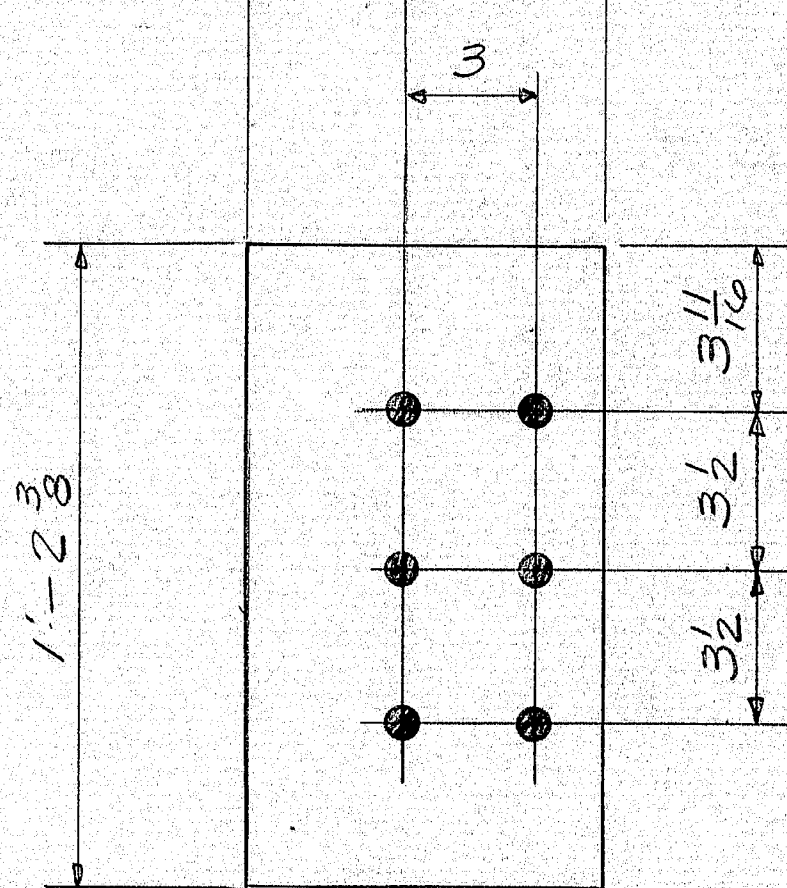
pcd2 & pbd2 8  
 BALANCE 7 3/4  
 pbc2 & pbd2 3 1/2  
 BAL 2 7/8



3 - pab2  
 8 - pad2  
 4 - paf2  
 7 - pam2  
 8 - pav2  
 7 - paw2  
 2 - pbc2  
 6 - pbd2

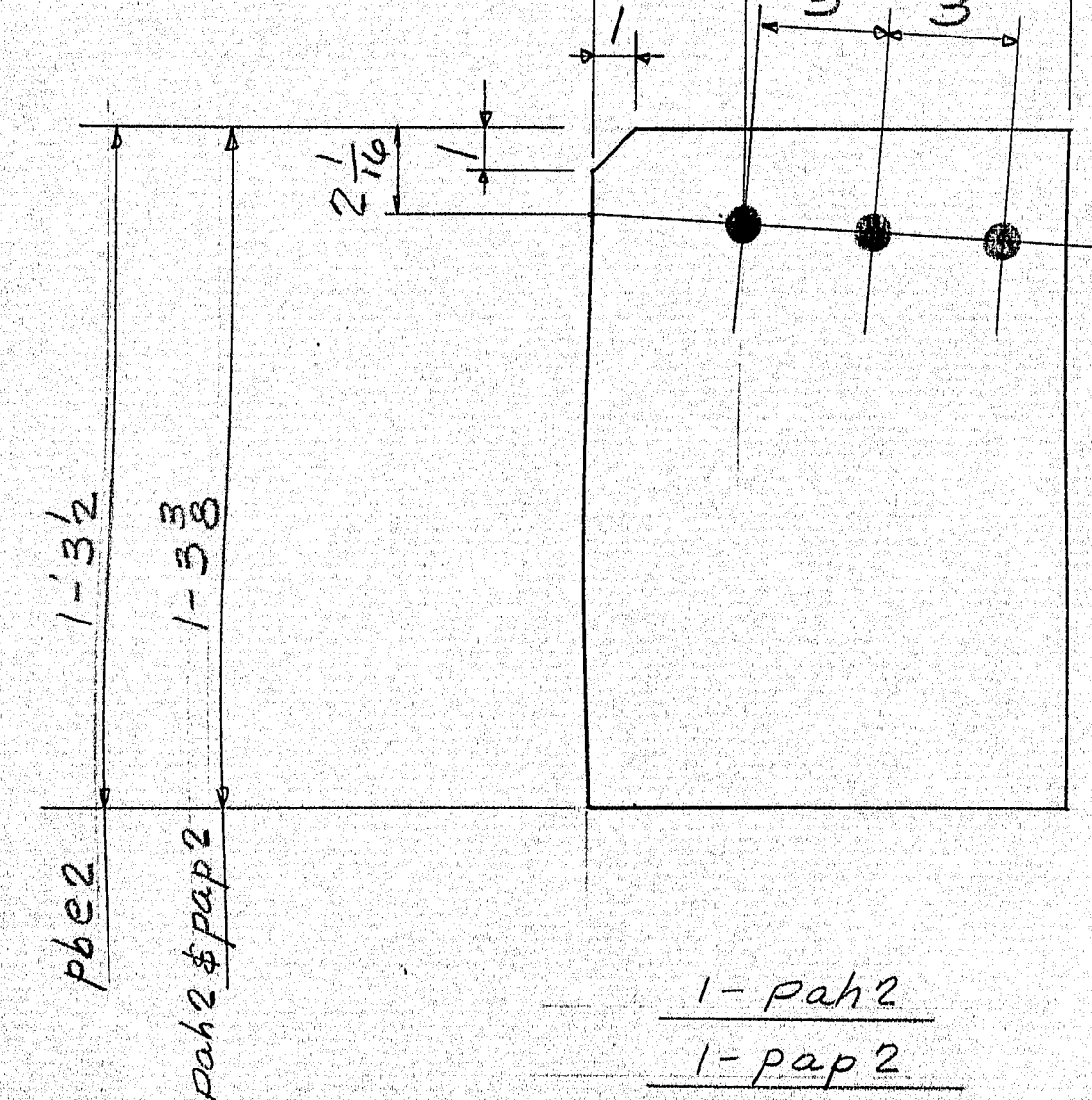
2 - pab2  
 2 - pad2  
 2 - paf2  
 2 - pam2  
 2 - pav2  
 1 - paw2  
 10 - pbc2  
 1 - pbd2

pae2 7 3/4  
 pbb2 8  
 pae2 2 3/8  
 pbb2 3 1/2



2 - pae2  
 2 - pbb2

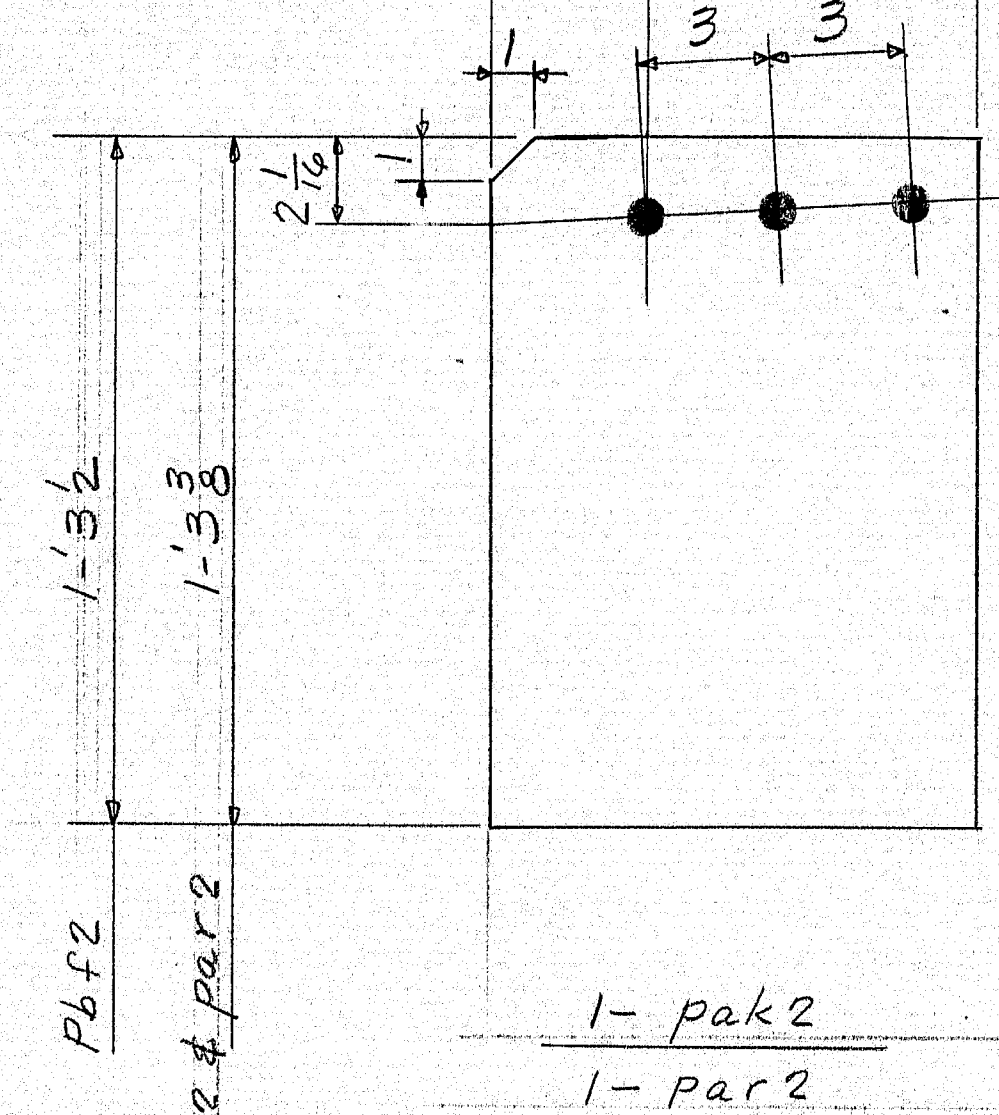
pah2 & pap2 10 3/4  
 pbe2 11  
 pah2 & pap2 2 3/8  
 pbe2 3 1/2



1 - pah2  
 5 - pap2  
 8 - pbe2

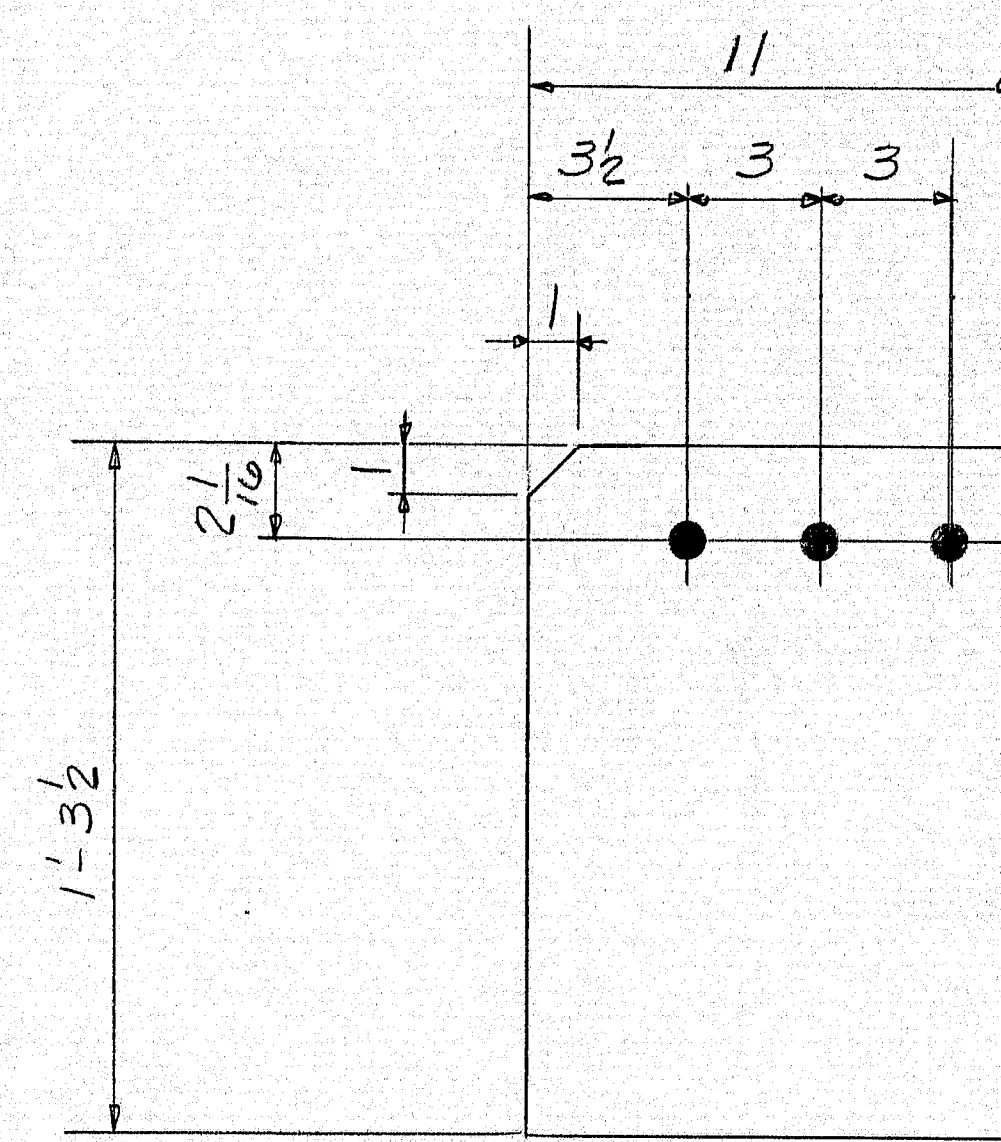
1 - pah2  
 1 - pap2  
 1 - pbe2

pak2 & par2 10 3/4  
 pbf2 11  
 pak2 & par2 2 15/16  
 pbf2 3 1/2



8 - pbf2  
 5 - pak2  
 7 - par2

1 - pak2  
 1 - par2  
 1 - pbf2



2 - pbg2

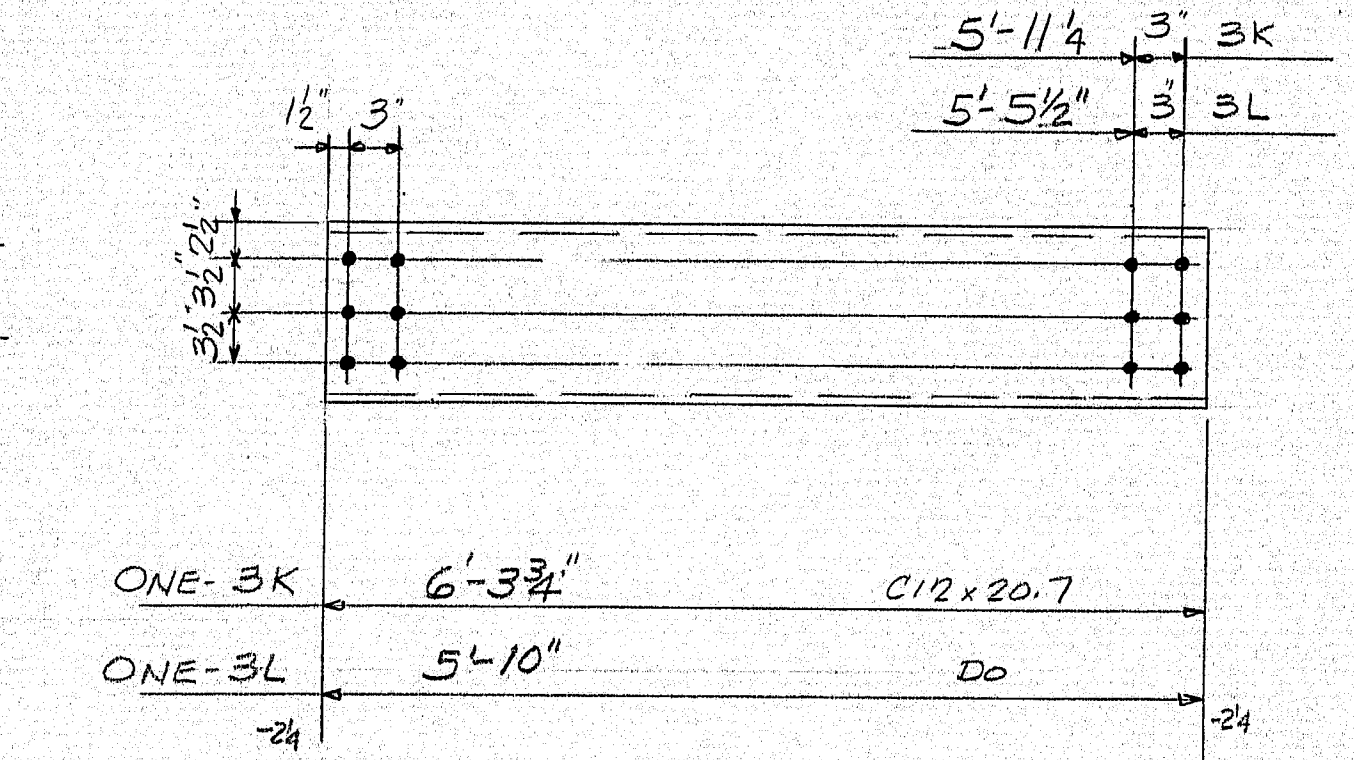
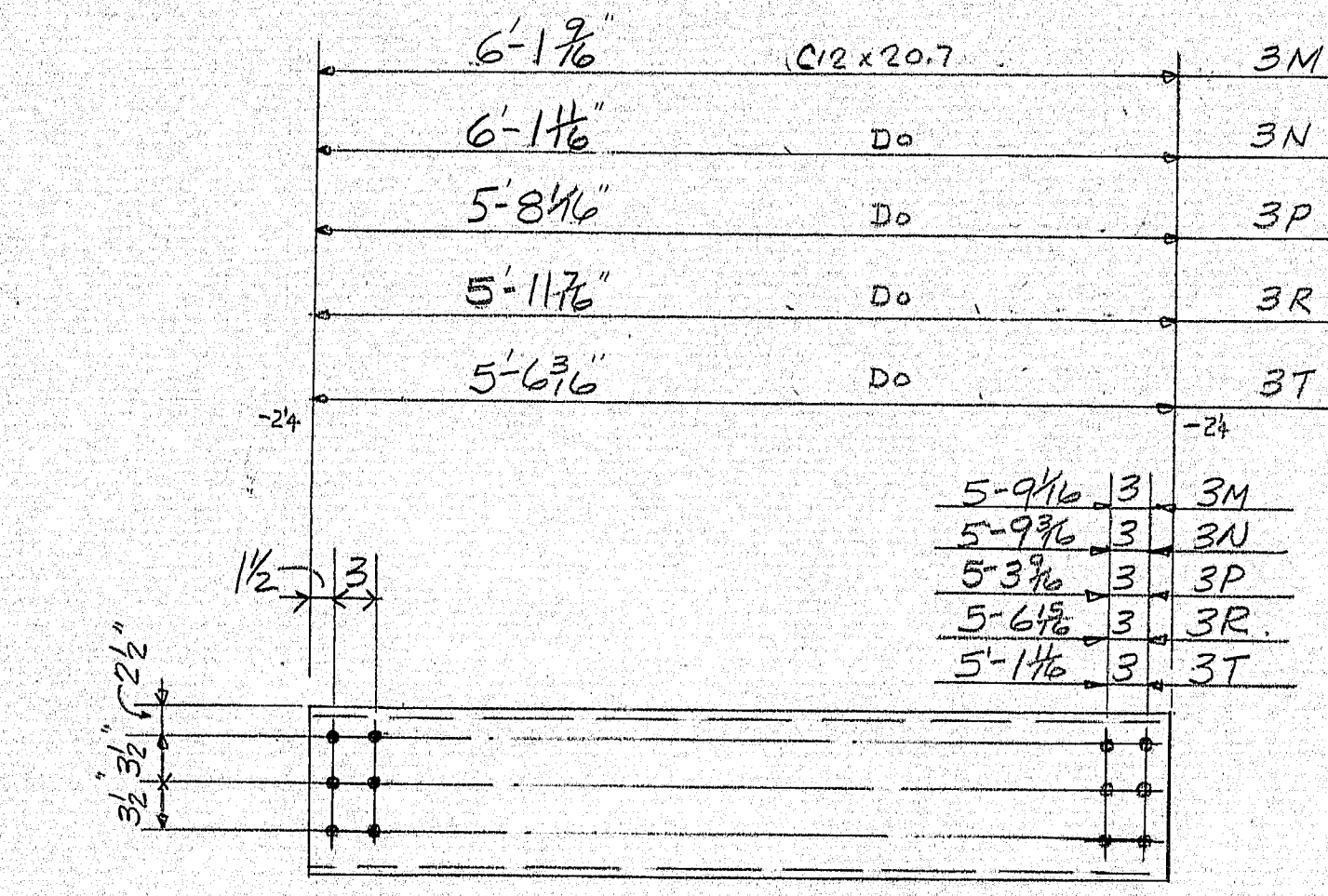
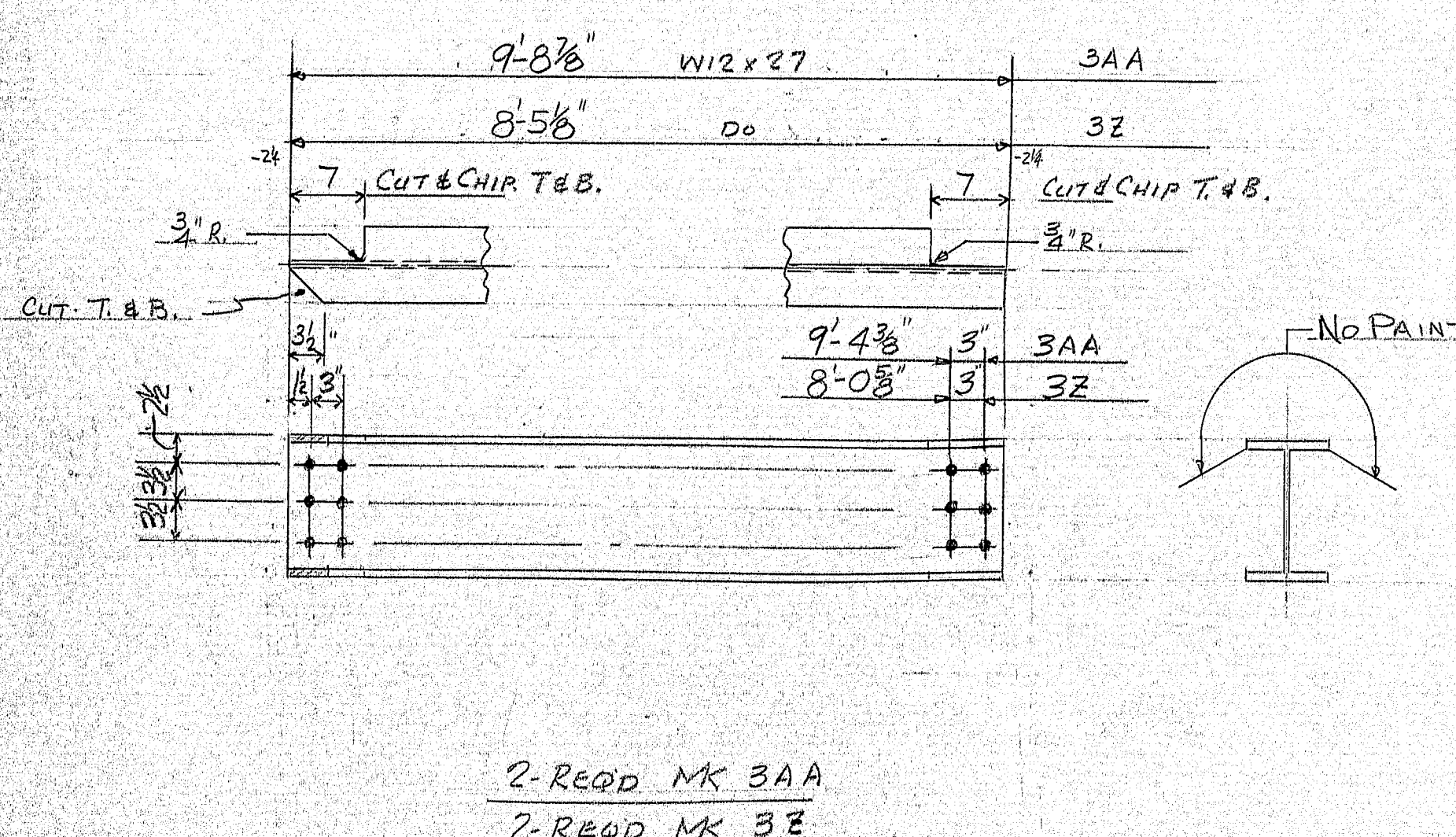
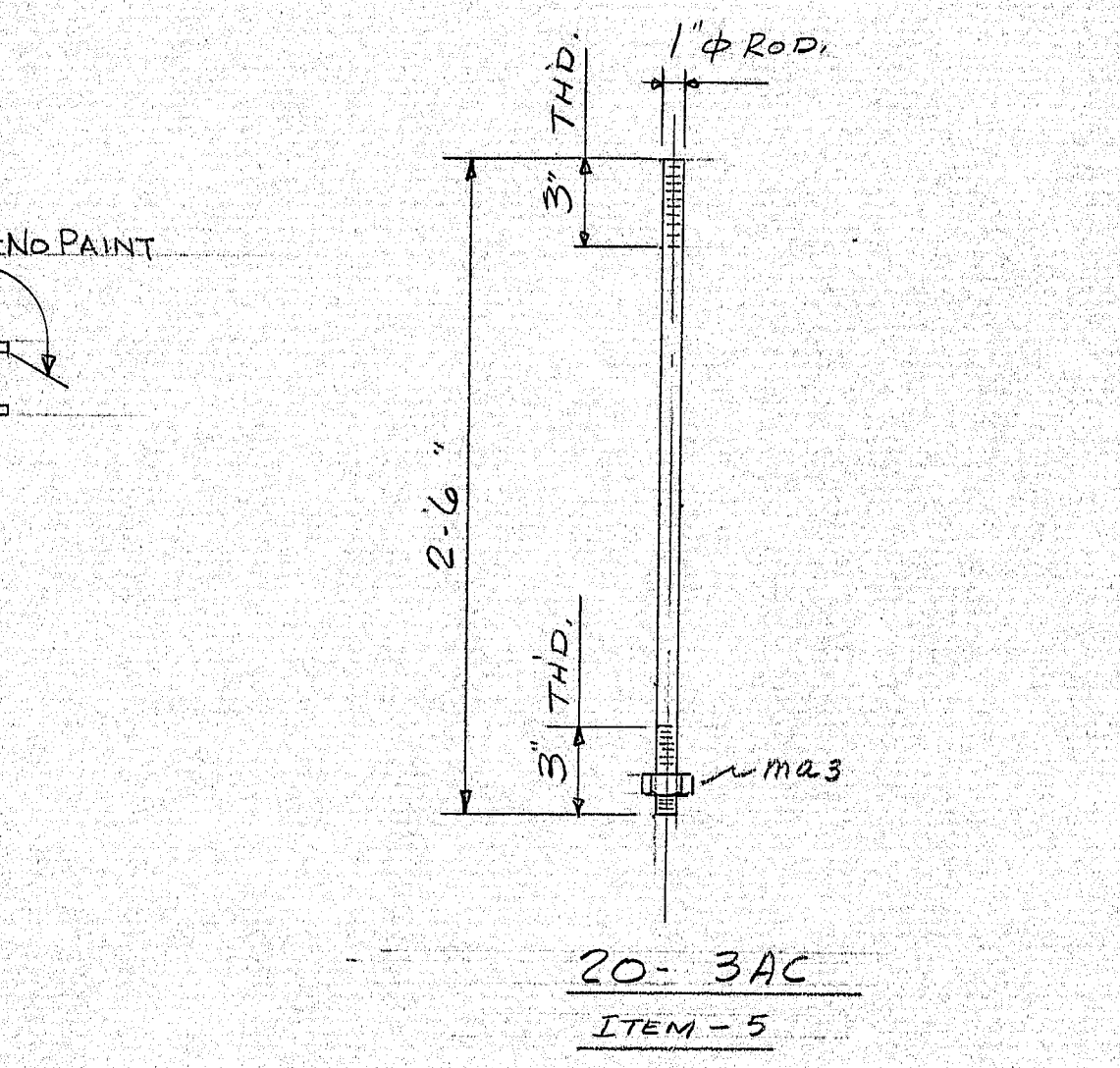
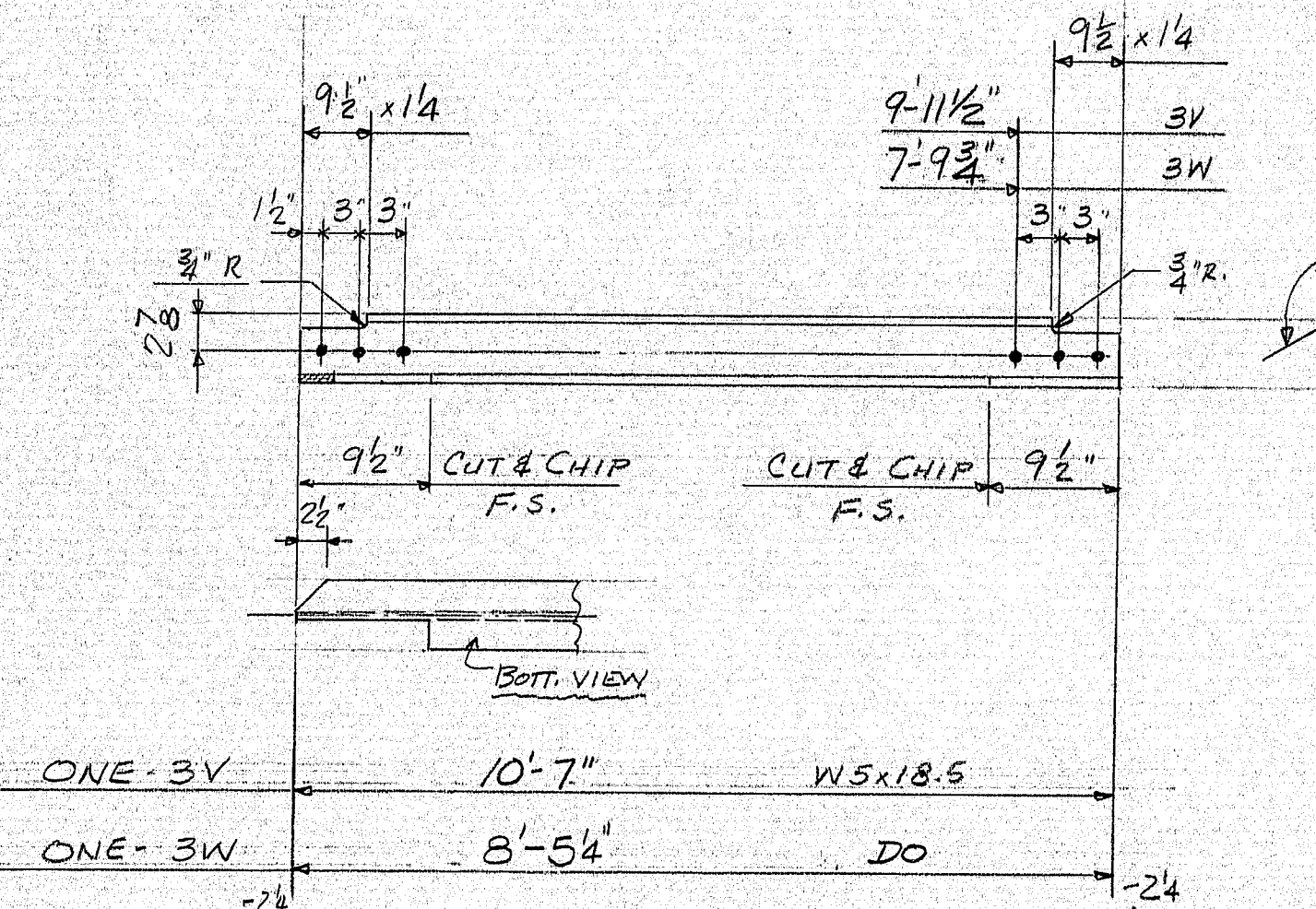
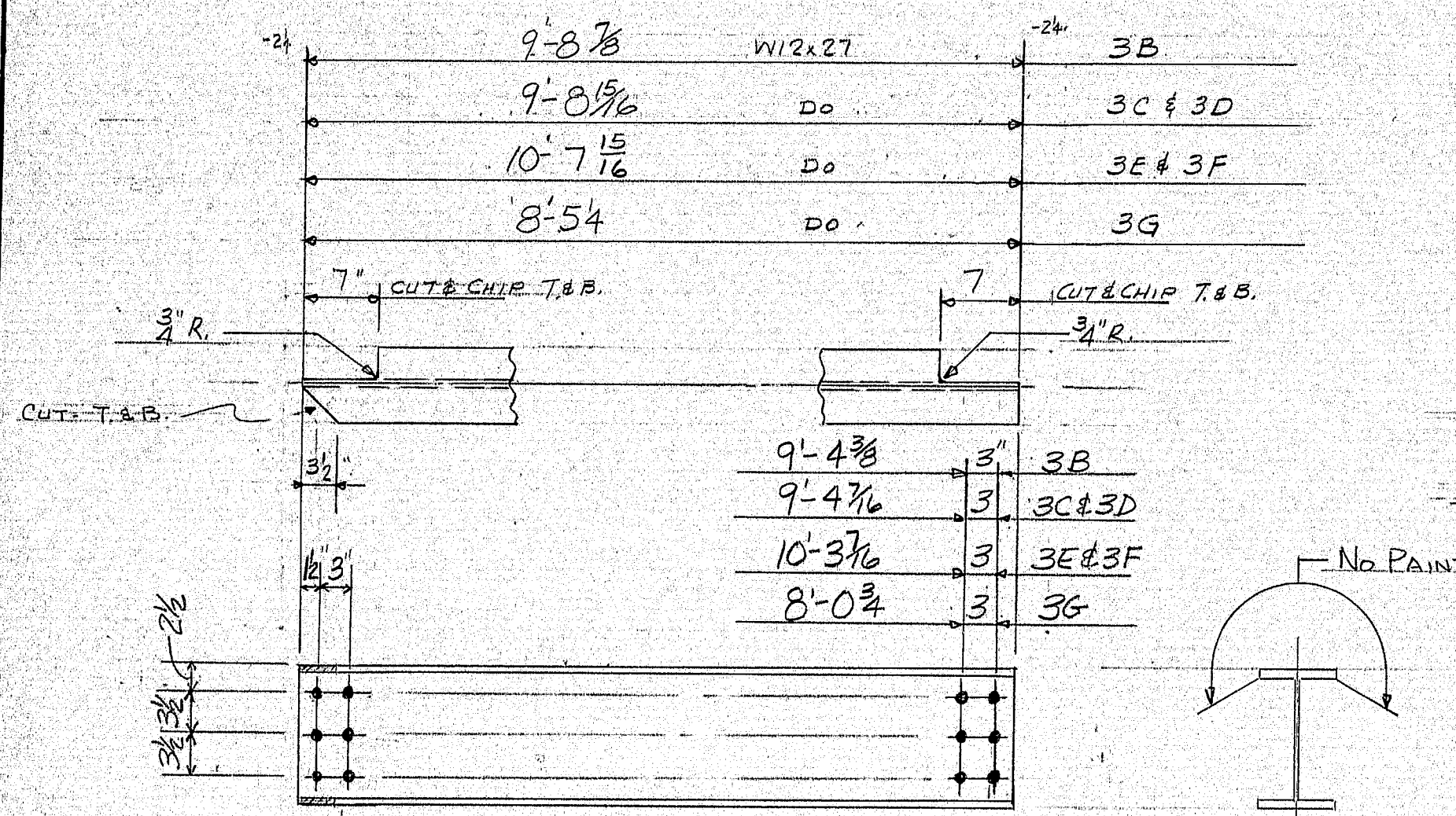
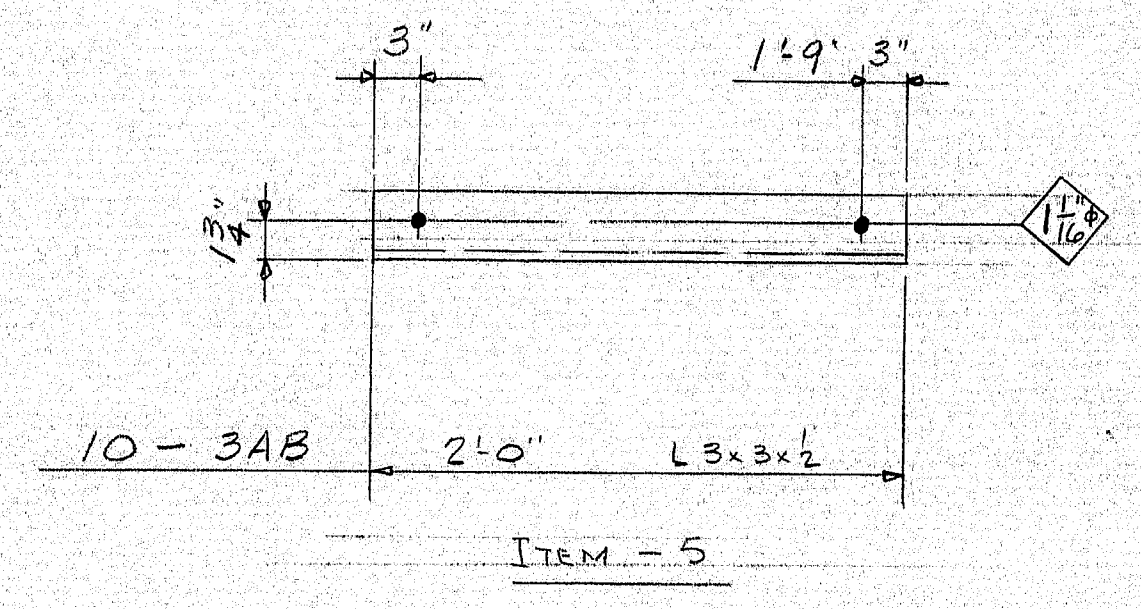
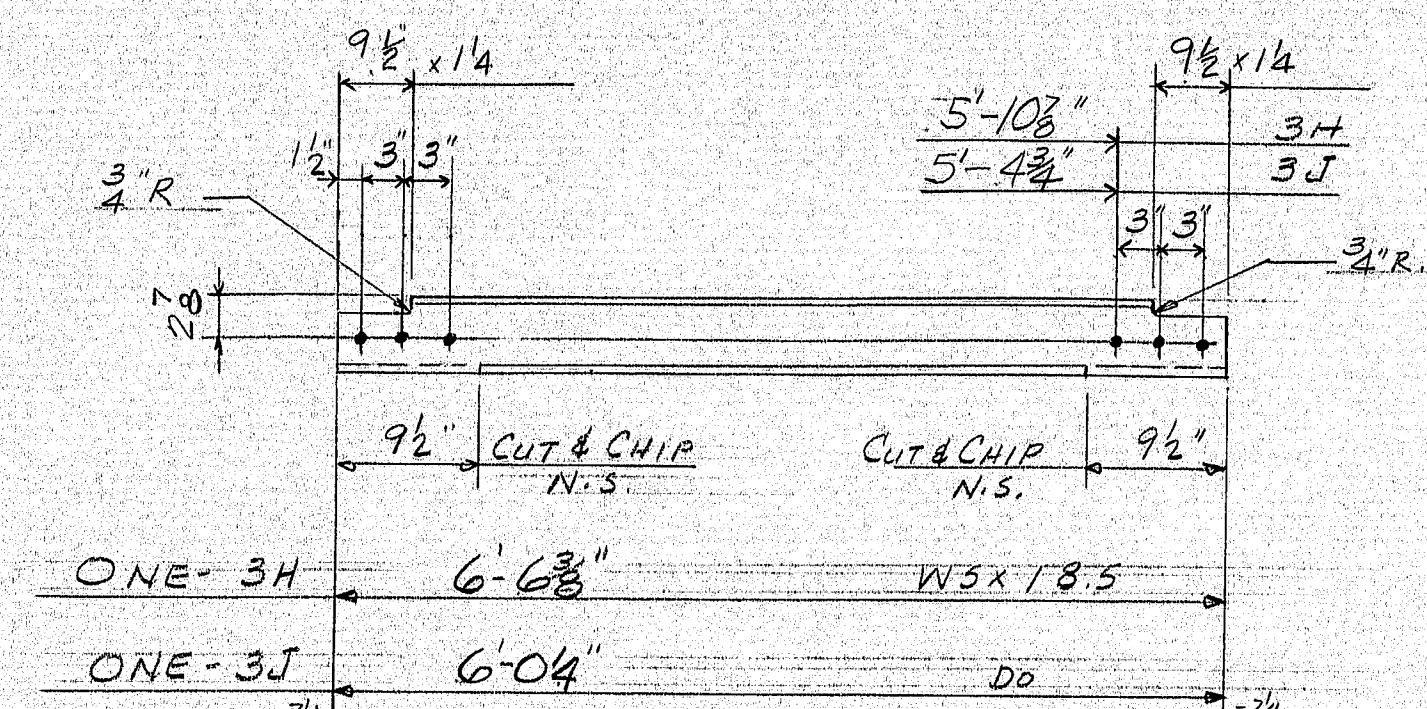
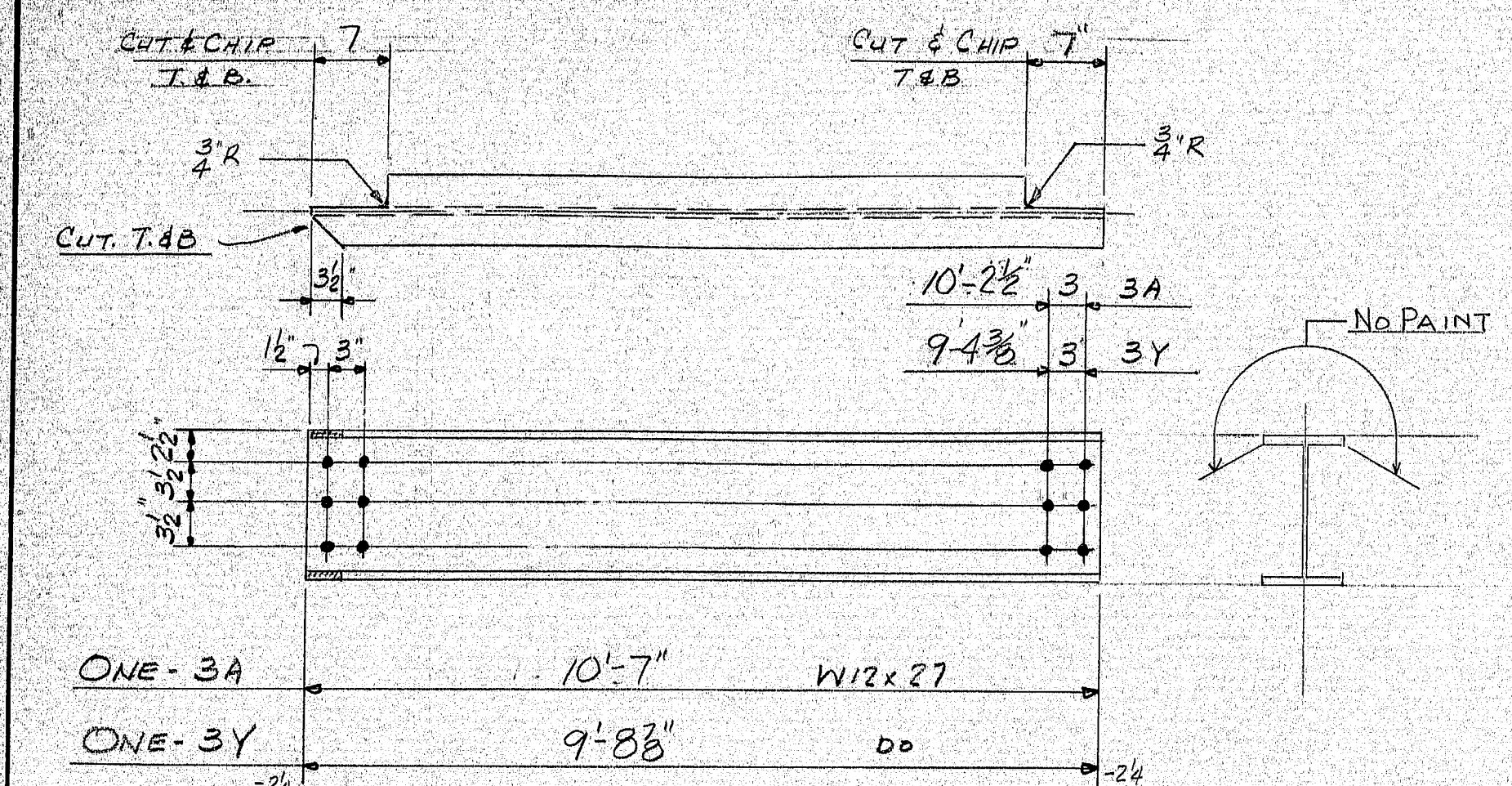
SEE DNG # 2 FOR PLATE LOCATIONS

MAINE DOT. PROJECT \*MG-7201(1)  
 DIAPHRAGM CONN. PLATES

APPROVAL AND REVISIONS		MAINE - CASCADE IRON WORKS BAKER STREET, CLINTON, MAINE 04927 PHONE 207-426-2691	
1	F.A. 4/22/76	PROJECT	NORTH STREET BRIDGE
2	JPA 6/16/76	LOCATION	WATERVILLE, MAINE
3	Dist. 7/14/76	ARCHITECT	STATE OF MAINE
4	GUSSET R. 5/25/76	CONTRACTOR	COLLAMAN BROS., INC.
5	Shop 8/2/76		
6	Dist 8/2/76		
7			
8			
9			
10			
PAINT		DRAWN BY MARGO	CHECKED BY MARGO
HOLES 1 3/16"		DATE	4/5/76
		PROJ. NO. 76-220-1	DRWG. NO. 2A

162-40





# MATERIAL SCHEDULE

MARK	NO.	SHAPE	LENGTH	Q. OR S.	CUT FROM	REMARKS	WEIGHT
3A	1	W12x27	10' 7"	1	to 0		286
3B	1		9' 8 3/8"	do			263
3C	1		9' 8 3/8"	do			263
3D	1		9' 8 3/8"	do			263
3E	1	DO	10' 7 1/2"	1	to 6		288
3F	1		10' 7 1/2"	do			288
3G	1		8' 5 1/4"	do			228
3Y	1		9' 8 3/8"	do			263
3Z	2		8' 5 1/4"	1	to 0		456
3AA	2	W12x27	9' 8 3/8"	do			526
3K	1	C12x20.7	6' 3 3/4"	2	to 0		131
3L	1		5' 10"	do			121
3M	6		6' 1 7/8"	do			761
3N	1	DO	6' 1 7/8"	do			121
3P	1		5' 8 1/2"	do			117
3R	1		5' 11 7/8"	do			123
3T	1	C12x20.7	5' 6 3/8"	do			114
3H	1	W5x18.5	6' 6 3/8"	1	to 0		121
3J	1	DO	6' 0 1/4"	do			111
3V	1	DO	10' 7"	do			196
3W	1	DO	8' 5 1/4"	do			156
3AB	10	L3x3x1/2	2' 0"	1	to 0		188
3AC	20	1/4" ROD	2' 6"	1	to 0	THD. 2-5	133
	20	1/4" HEX. NUTS				A307	6
							5528

ONE-REQD-MK 3B  
ONE-REQD-MK 3C  
ONE-REQD-MK 3D  
ONE-REQD-MK 3E  
ONE-REQD-MK 3F  
ONE-REQD-MK 3G

6-REQD-MK 3M  
ONE-REQD-MK 3N  
ONE-REQD-MK 3P  
ONE-REQD-MK 3R  
ONE-REQD-MK 3T

2-REQD-MK 3AA  
2-REQD-MK 3Z

NOTE:  
NO PAINT WITHIN 3" OF OPEN HOLES.  
PAINT 1-COAT - BASIC LEAD SILICO-CHROMATE (ORANGE)

MAINE DOT PROJECT #M4-720(1)

APPROVAL AND REVISIONS	MAINE - CASCADE IRON WORKS BAKER STREET, OLIVION, MAINE 04927 PHONE 207-486-2681
1. F.A. 4/22/76	
2. PFA 4/16/76	
3. DIST 7/14/76	
4. Shop 8/5/76	
5.	
6.	
7.	
8.	
9.	
10.	

PROJECT NORTH STREET BRIDGE  
LOCATION WATerville, ME.  
ARCHITECT STATE OF MAINE  
CONTRACTOR CALLAHAN BROS., INC.

PAINT SEE NOTE  
HOLES 1 5/16" UN.

DRAWN BY M4-720-24  
CHECKED BY M4-720-24  
DATE 3/2/76  
DRWG. NO. 3

162-41